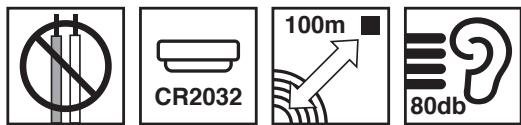
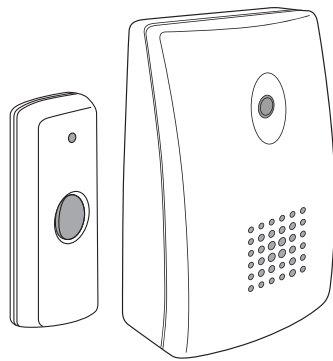


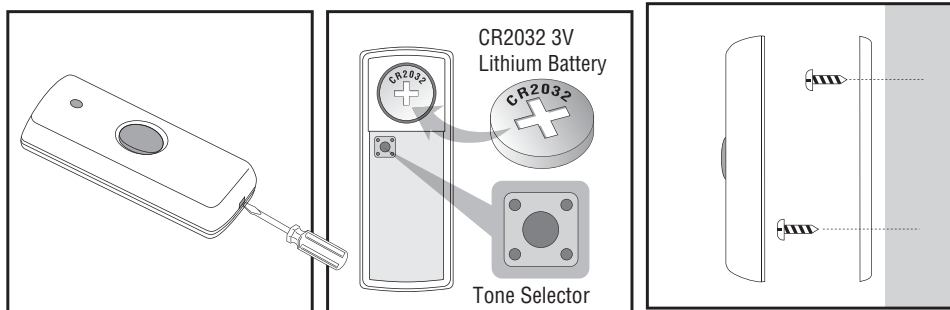
## Please read and retain for future reference Walkabout Door Chime (54382/55273)

No wiring is required for this Door Chime. When the Push Button is pressed, it sends a wire free signal to the Door Chime that activates the chime sound. The operating range is up to 100 metres (320 ft. approx) line of sight; however, the range of the wire free signal will be reduced if the signal is transmitter through a number of walls or ceilings. Metal, and UPVC reinforced doorframes will also reduce the operating range.



### Push Button Unit

1 x 3 volt Lithium battery (CR3032) has been installed. Your Push Button is ready to use.



### To change the Battery

Remove the back cover by using a small, flat screwdriver push in the tab on the bottom. Lift out the old battery and insert 1 x 3 volt Lithium battery (CR2032), ensuring the positive (+) side is facing you. Refit the back plate.

### To Mount

Use the double sided pad supplied. Alternatively punch out the 2 holes on the back plate and use this as a template to mark the fixing position. Drill holes and secure the back plate with the screws and wall plugs supplied. Fix the front on the back plate.

Caution - Do not punch out the holes if the screw fixing are not to be used, as this will affect the weather resistance of the unit.

Leave a gap of 3mm between the screw head and the wall. Remove the belt clip and locate the keyhole slot on the back of the unit over the screw head.

### Optional

Additional Push Buttons units may be purchased and installed at other locations i.e. the back door etc. This can then be adjusted to a different tone so that the source of the chime can be identified. Additional Push Button units can be obtained from your retailer or from Uni-Com on 01732 865238

### Important

The Portable Door Chime is a sensitive electronic product and the following precautions should be followed.

- The Door Chime unit should only be used in dry conditions.
- Do not expose the Door Chime unit to direct sunlight or moisture.
- If leaving the Push Button or Door Chime unit for long periods remove the batteries and store safely.
- Do not drop either unit or subject to excessive blows.

**Warranty:** This unit is guaranteed against faulty parts or workmanship for a period of one year from date of purchase. The guarantee does not cover batteries, damage caused by battery leakage, damage caused by incorrect installation, or physical damage to the casing.

This guarantee does not affect your statutory rights.

### Trouble Shooting and User hints

Problem	Possible causes	Suggested remedy
Door Chime unit does not sound when Push Button pressed.	<ol style="list-style-type: none"> <li>1. Units out of range, max 100 metres.</li> <li>2. Push Button and Door Chime units not on the same channel.</li> <li>3. Battery needs replacing in Push Button unit.</li> </ol>	<ol style="list-style-type: none"> <li>1. Move the Door Chime closer to the Push Button unit.</li> <li>2. Check the channel set up. Remove batteries from Door Chime and allow to rest for 30 seconds.</li> <li>3. Replace battery.</li> </ol>
Door Chime sounds without Push Button being pressed.	A similar wireless product is being used on the same channel.	Change channel. See Channel Set Up.

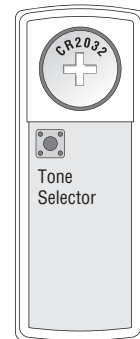
**Important note:** there are no user serviceable parts in the unit: do not attempt to open the unit to effect repair it.

### Tone Set Up

The tone selector is a small black button located inside the Push Button unit, below the battery compartment, marked with the letter "S". The tone is pre-set at the factory to the "Westminster" chime. If you wish to change it to one of the other seven tones, press and release the button and a tone will be heard from the Door Chime unit. Continue pressing and releasing the button until the desired tone is heard. The last one heard is the one retained in the units memory.

- |                        |                       |
|------------------------|-----------------------|
| 1. Westminster         | 5. Banjo on my knee   |
| 2. Ding Dong Ding Dong | 6. Twinkle Twinkle    |
| 3. Telephone           | 7. It's a small world |
| 4. Circus Theme        | 8. Dog barking        |

Push Button



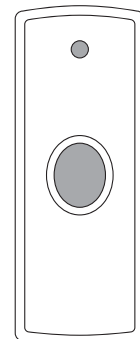
### Channel Set Up

The unit comes from the factory on a pre-set channel. However should your door chime activate intermittently or for no apparent reason, it is possible that another unit is operating nearby on the same channel.

### To change the channel

The door chime has a self learning channel feature so no adjustments are required. Simply remove the batteries from the Chime Unit, and leave to rest for 60 seconds.

Remove and re-insert the battery in the Push Button. Put the batteries back into the Chime Unit and a double beep will be heard. Press the Push Button to confirm the new code is working. Should you need to change channels, this process can be followed many times as there are over 250 different channels available.



Push Button

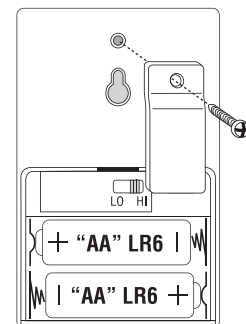
### Door Chime Unit

### To change the batteries

Slide open the battery compartment door. Insert 2 x 1.5 volt AA alkaline batteries ensuring the battery polarities match the internal markings. Replace the battery door.

### To mount (if needed)

For carrying around the home and garden, there is a belt clip fitted to the Door Chime. Should you wish to mount the unit there is a slotted hanging hole on the rear of the unit, behind the belt clip. Drill your hole (fit wall plug if necessary) and fit screw into fixing position.



### Specification

#### Push Button unit

Power : 1 x 3 volt Lithium battery CR2032 (included)  
Consumption : 9.0mA - ON  
0.003mA - OFF

#### Door Chime unit

Power : 2 x 1.5 volt AA Alkaline batteries (not included)  
Operating temperature : -10°C to +40°C  
Operating distance : 100 metres (320 ft) line of sight  
Selectable tones : 8  
Channels : 256 (chime unit self learning)

R2 Device - device where the sound output is created by the initial operation of the control and where the period of sound output continues for designed duration irrespective of condition of the control.



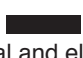
This product is supplied with 1 x CR2032 Lithium battery in the Bell Push and uses 2 x "AA" alkaline batteries in the Chime Unit. These should be removed prior to disposal of both units.

Help the environment by disposing of your product and batteries responsibly. The wheelie bin symbols indicate the product and batteries must not be disposed of in the domestic waste as they contain substances which can be damaging to the environment and health. Please use designated collection points or recycling facilities when disposing of the item or batteries.

More information can be found on: <http://www.recycle-more.co.uk>; [www.recyclenow.com](http://www.recyclenow.com)

Uni-Com (Global) Ltd.  
1 & 2 Enterprise Way  
Edenbridge  
Kent  
TN8 6EW



Symbol  indicating separate collection for electrical and electronic equipment.



CE0681

Made in China