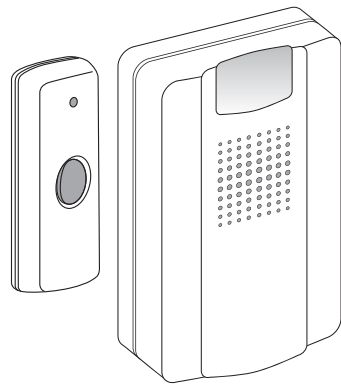
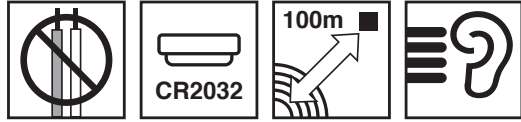


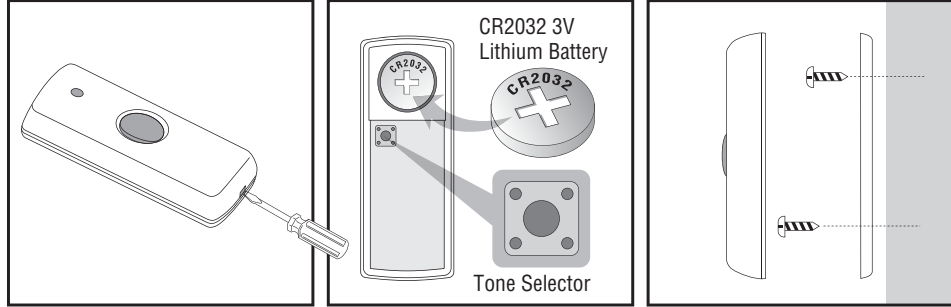
Please read and retain for future reference Strobe Door Chime (54672)

No wiring is required for this Door Chime. When the Push Button is pressed, it sends a wire free signal that activates the chime/strobe. The operating range is up to 100 metres (320ft. approx) however, the range of the wire free signal will be reduced if the signal is transmitted through a number of walls or ceilings. Metal and reinforced UPVC doorframes will also reduce the operating range.



Push Button Unit

1 x 3 volt Lithium Battery (CR2032) has been installed. Your Push Button is ready to use.



To change the Battery

Remove the back cover by using a small, flat screwdriver push in the tab on the bottom. Lift out the old battery and insert 1 x 3 volt Lithium battery (CR2032), ensuring the positive (+) side is facing you. Refit the back plate.

To Mount

Use the double sided pad supplied. Alternatively punch out the 2 holes on the back plate and use this as a template to mark the fixing position. Drill holes and secure the back plate with the screws and wall plugs supplied. Fix the front on the back plate.

Caution - Do not punch out the holes if the screw fixing are not to be used, as this will affect the weather resistance of the unit.

Strobe Light Operation

When the door chime is activated, the Strobe light will flash approximately 8 times over a 20 second period. Note: The Strobe will continue flashing after the melody has finished.

A 3 position switch located in the chime's battery compartment can be set to select either:

- Chime only
- Strobe light only
- Chime and Strobe together

CAUTION: do not look directly at the Strobe as this could affect your sight

Sound Volume Adjustment

Sound volume control can be adjusted to high or low. The high-low switch is located in the battery compartment of the Chime unit.

Optional

Additional Push Button units may be purchased and installed at other locations i.e. the back door etc. They can then be adjusted to a different tone so that the source of the chime can be identified. Additional Push Button units can be obtained from your retailer or from Uni-Com on 01732 865238. (Stock reference 54580)

Important

The Strobe Door Chime is a sensitive electronic product and the following precautions should be followed.

- The Door Chime unit should only be used in dry conditions.
- Do not expose the Door Chime unit to direct sunlight or moisture.
- If leaving the Push button or Door chime unit for long periods remove batteries and store safely.
- Do not drop either unit or subject to excessive blows.

Warranty: This unit is guaranteed against faulty parts or workmanship for a period of one year from date of purchase. The guarantee does not cover batteries, damage caused by battery leakage, damage caused by incorrect installation, or physical damage to the casing.

This guarantee does not affect your statutory rights.



This product is supplied with 1 x CR2032 Lithium battery in the Bell Push and uses 2 x "C" alkaline batteries in the Chime Unit. These should be removed prior to disposal of both units.

Help the environment by disposing of your product and batteries responsibly. The wheelie bin symbols indicate the product and batteries must not be disposed of in the domestic waste as they contain substances which can be damaging to the environment and health.

Please use designated collection points or recycling facilities when disposing of the item or batteries.

More information can be found on: <http://www.recycle-more.co.uk>; www.recyclenow.com

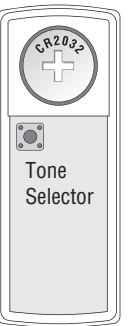
Tone Set Up

The tone selector is a small black button located inside the Push Button unit, below the battery compartment, marked with the letter "S". The tone is pre-set at the factory to the "Westminster" chime.

If you wish to change it to one of the other seven tones, press and release the button and a tone will be heard from the Door Chime unit. Continue pressing and releasing the button until the desired tone is heard. The last one heard is the one retained in the units memory.

- Westminster
- Ding Dong Ding Dong
- Telephone
- Circus Theme
- Banjo on my knee
- Twinkle Twinkle
- It's a small world
- Dog barking

Push Button



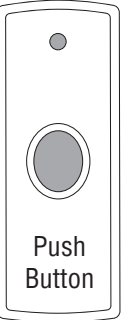
Channel Set Up

The unit comes from the factory on a pre-set channel.

However should your door chime activate intermittently or for no apparent reason, it is possible that another unit is operating nearby on the same channel.

To change the channel

The door chime has a self learning channel feature so no adjustments are required. Simply remove the batteries from the Chime Unit, and leave to rest for 60 seconds. Remove and re-insert the battery in the Push Button. Put the batteries back into the Chime Unit and a double beep will be heard. Press the Push Button to confirm the new code is working. Should you need to change channels, this process can be followed many times as there are over 250 different channels available.



Door Chime Unit

To fit or replace the batteries slide open the battery cover and insert 2 x 1.5 volt "C" UM2 or R14 size Alkaline batteries, ensuring the battery polarities match the internal markings.

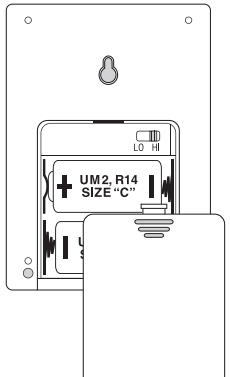
After installation the unit will "beep" twice to confirm the channel setting.

The Chime unit can be either wall mounted or free standing.

To wall mount, drill and fit a wall plug (if fixing to masonry) and screw a 3 x 16mm screw into the fixing position.

Leave a gap of 3mm between the screw head and the wall.

Locate the keyhole slot on the back of the unit over the screw.



Door Chime Operation

Press and release the button on the Push Button unit once; The Door Chime unit will sound and the strobe will flash. The sound will stop as soon as the melody ends.

The Strobe will flash for approximately 20 seconds. For the chime to sound again, press and release the button again. Holding the button in will NOT repeat the sound.

Trouble Shooting & User Hints

Problem	Possible Causes	Suggested Remedy
Chime does not sound	<ol style="list-style-type: none"> Units are out of range (Max. range 100 metres) Push Button and Chime Units are not set on same Channel. Battery(s) need replacing in either unit. Wrong polarity of battery in bell push. Wrong type of battery in Chime unit. 	<ol style="list-style-type: none"> Operate the chime unit within the operation range (100M). Check the Channel Set Up. Replace battery(s). Battery as internal markings. Check batteries fitted are Alkaline (i.e. Duracell).
Chime sounds without Push Button being pressed.	A similar Wireless Door Chime product is operating nearby on the same frequency digital codes	Re-set the channel (Check the Channel Set Up).

Important note: There are no user serviceable parts in the unit; do not attempt to open the unit to effect repair it.

Specification

Push Button unit

Power : 1 x 3 volt CR2032 Lithium battery (included)
Consumption : 9.0mA - ON / 0.003mA - OFF

Chime unit unit

Power : 2 x 1.5 volt ("C", UM2 & R14 - not included)
Consumption : Sound only - 100mA / Strobe Light Only - 200mA / Sound & Light - 280mA / Stand by - 0.35mA

Operating Temperature : -10°C to +45°C

Operating Distance : 100 metres (320 ft. approx.) Line of sight

Selectable Tones : 8

Channels : 256 (Chime unit self learning)

Strobe Light : Flash Approximately 8 times in 20 seconds

R2 Device - device where the sound output is created by the initial operation of the control and where the period of sound output continues for designed duration irrespective of condition of the control.

Uni-Com (Global) Ltd.
1 & 2 Enterprise Way
Edenbridge
Kent
TN8 6EW



CE0681



Symbol indicating separate collection for electrical and electronic equipment.