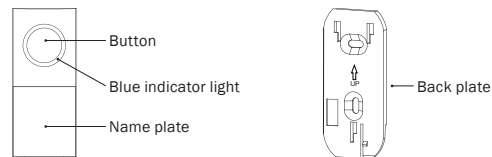


PRODUCT FEATURES

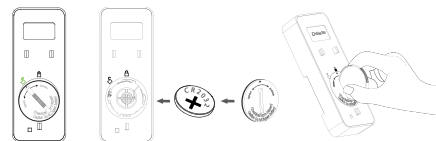
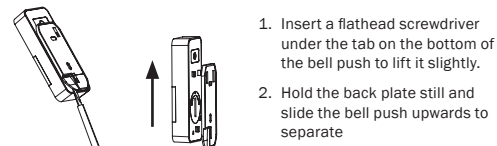
Bell push



1

BATTERY INSTALLATION

Bell push



2

PAIRING

A **wireless +** bell push will work with all **wireless +** door chimes. A maximum of 8 bell pushes can be paired to the same chime unit. To add an extra bell push repeat the pairing procedure with the new bell push.

INSTALLATION

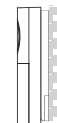
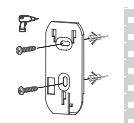
Test the bell push in its intended locations before you fix it in place.

The operating range will be reduced if the bell push is mounted on metal or double uPVC door frames. Electrical/wi-fi equipment and the number of walls between the bell push and the chime unit will also reduce the operating range.

1. Adhesive pad



2. Screws



3

SPECIFICATION



Power supply: 1 x CR2032 button cell battery

Frequency: 433.92MHz

Operating temp: -5°C to 55°C

Standby power consumption: <5µA



UK(NI)

Hereby Uni-Com declares that the radio equipment type door chime is in compliance with Radio Equipment Regulations 2017 (SI 2017/1206) and Directive 2014/53/EU. The full text of the UKCA Declaration of Conformity is available to view at www.uni-com.co.uk



Made in China



4

SAFETY WARNING

Chime unit is for indoor use only. The bell push is weather resistant, do not submerge. If cleaning of the chime unit is required, remove from the mains power and wipe unit with a dry cloth. Do not use if casing of the chime unit becomes cracked or damaged. Exhausted batteries must be removed immediately. Failure to follow these instructions could result in fire, electric shock, injury or damage to persons, product or property and will invalidate the guarantee.



BATTERY WARNING

KEEP OUT OF REACH OF CHILDREN

Swallowing can lead to chemical burns, perforation of soft tissue and death. Severe burns can occur within 2 hours of ingestion. Seek immediate medical attention.



Batteries



The bell push uses 1 x CR2032 button cell battery. It should be removed prior to disposal. Help the environment by disposing of your products and batteries responsibly.

Guarantee

This product is guaranteed for one year from the date of purchase against faulty parts or workmanship. It does not cover batteries or physical damage to the units. Proof of purchase required. This does not affect your statutory rights.

5

UNI-COM

Bell push

Model: 68457

Operating Instructions

Uni-Com

Long Reach, Galleon Boulevard,
Crossways Business Park,
Dartford, Kent, DA2 6QE,
United Kingdom

Email: info@uni-com.co.uk

Web: www.uni-com.co.uk

Authorised Representative

Tucks O'Brien, 24 Magna Drive,
Magna Business Park,
Citywest Road, Dublin 24,
D24 FNYO, Ireland

©2024 Uni-Com. All rights reserved.

5673/V1