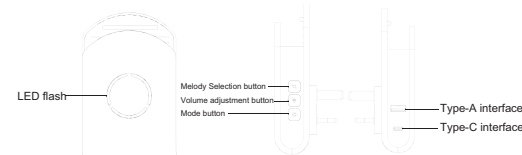
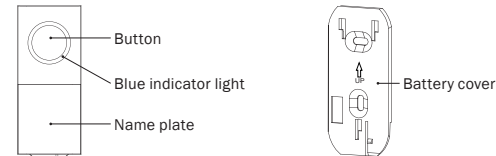


PRODUCT FEATURES

Chime unit



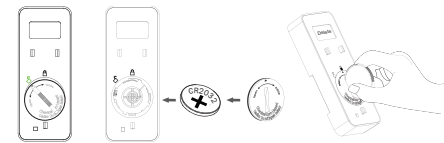
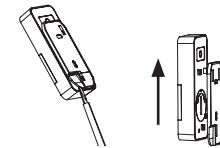
Bell push



1

BATTERY INSTALLATION

Bell push



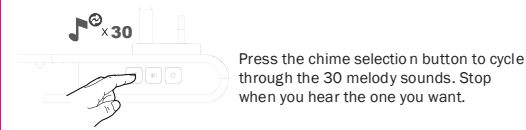
2

QUICK SET UP GUIDE

Pairing



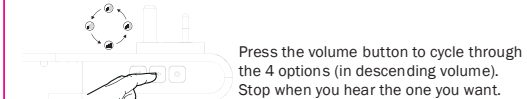
Chime selection



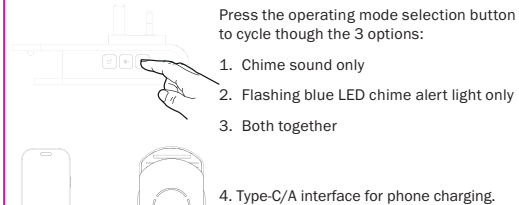
3

QUICK SET UP GUIDE cont.

Volume control



Operating mode selection



4

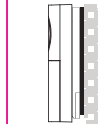
INSTALLATION

Test the units in their intended locations before you fix them in place.

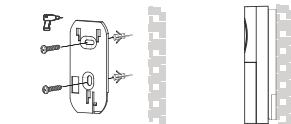
The operating range will be reduced if the bell push is mounted on metal or double uPVC door frames. Electrical/wi-fi equipment and the number of walls between the bell push and the chime unit will also reduce the operating range.

Bell push

1. Adhesive pad



2. Screws



5

SPECIFICATION



Power input: 230V AC 50Hz

Power output: USB-A: 5Vdc, 2.4 A
USB-C: 5Vdc, 2.4 A
USB-A+C: 5Vdc, 2.4 A

Type R2 device



Power supply: 1 x CR2032 button cell battery

Frequency: 433.92MHz

Operating temp: -5°C to 55°C

Standby power consumption: <5µA



Hereby Uni-Com declares that the radio equipment type door chime is in compliance with Radio Equipment Regulations 2017 (SI 2017/1206) and Directive 2014/53/EU. The full text of the UKCA Declaration of Conformity is available to view at www.uni-com.co.uk

6

TROUBLESHOOTING

Adding extra chime units

All **wireless +** Uni-Com door chimes work together and you can add unlimited chime units to your set up. To add an extra chime unit repeat the pairing procedure with the new chime unit.

Adding extra bell pushes

A **wireless +** bell push will work with all **wireless +** door chimes. A maximum of 8 bell pushes can be paired to the same chime unit. To add an extra bell push repeat the pairing procedure with the new bell push.

Chime sounds when nobody is pressing the bell push

Your chime unit may be picking up outside interference from other wireless transmitters.



Clear the chime unit memory by pressing and holding the chime selection button for 20 seconds until a "Ding Dong" sound is heard. Repeat the pairing procedure.

7

TROUBLESHOOTING cont.

Chime doesn't sound when bell push is pressed

Does the blue LED bell push indicator light illuminate when it is pressed?

If NO:

1. Check the bell push battery to ensure has been installed correctly.
2. Replace the bell push battery.

If YES:

1. The chime unit may not be receiving signal from the bell push. Move the chime unit closer to the bell push.
2. The chime unit may be picking up outside interference from other wireless transmitters. Clear the chime unit memory and repeat the pairing procedure.



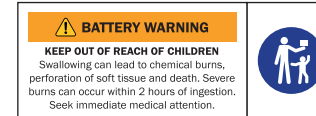
Made in China



8

SAFETY WARNING

Chime unit is for indoor use only. The bell push is weather resistant, do not submerge. If cleaning of the chime unit is required, remove from the mains power and wipe unit with a dry cloth. Do not use if casing of the chime unit becomes cracked or damaged. Exhausted batteries must be removed immediately. Failure to follow these instructions could result in fire, electric shock, injury or damage to persons, product or property and will invalidate the guarantee.



Batteries

The bell push uses 1 x CR2032 button cell battery. It should be removed prior to disposal. Help the environment by disposing of your products and batteries responsibly.

Guarantee

This product is guaranteed for one year from the date of purchase against faulty parts or workmanship. It does not cover batteries or physical damage to the units. Proof of purchase required. This does not affect your statutory rights.

9

UNI-COM

Door chime with USB chargers

Model: 68556

Operating Instructions

Uni-Com

Long Reach, Galleon Boulevard,
Crossways Business Park,
Dartford, Kent, DA2 6QE,
United Kingdom

Email: info@uni-com.co.uk
Web: www.uni-com.co.uk

Authorised Representative

Tucks O'Brien, 24 Magna Drive,
Magna Business Park,
Citywest Road, Dublin 24,
D24 FNYO, Ireland

©2024 Uni-Com. All rights reserved.

240003/V1